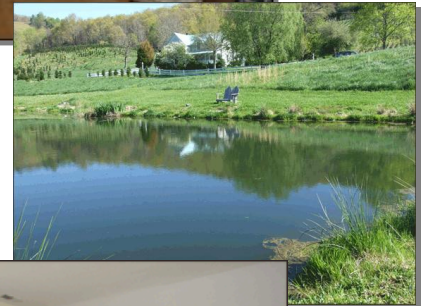


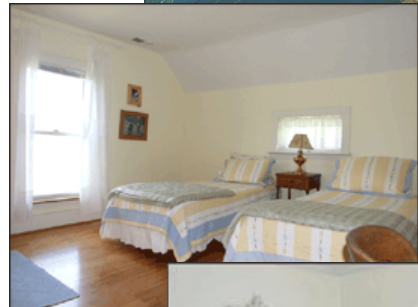
The Shepherd's Retreat Grayson County, VA.



**A Perfect Spot for an Artist,
Writer, or Family**



This is a charming 1901 farmhouse, located 35 miles south of Wytheville, VA, in rural Grayson County, on a 100-acre Christmas Tree Farm. This welcoming and cozy Victorian farmhouse is restored and fully furnished in cottage style. Available for rent by the weekend, week or by the month, it is a perfect retreat for an artist, writer, honeymooning couple, a family or nature lovers... anyone who appreciates the deep quiet and idyllic scenery of country life. Relax and enjoy the scenery from the front porch in the swing and rocking chairs or take advantage of the numerous outdoor activities which are available, such as hiking at Grayson Highlands, biking on the Virginia Creeper Trail, canoeing and tubing on the New River, or sightseeing and antiquing in historic Abingdon.



The farmhouse has many authentic features, like an original claw-footed bathtub and the original mantel for the fireplace which now has gas logs. There are three bedrooms, comfortably sleeping 6, with a double bed in two bedrooms and two twin beds in the other bedroom. There is a sleeper sofa in the family room for additional guests. There are two full baths with towels and linens provided. There is an attached garage. Smoking and pets are not permitted in the house. A DVD player for viewing movies is provided. There is a land-line phone in the house and internet service at the Independence Library. There is a stone patio with a gas grill. Enjoy the stocked pond located on the property for catch and release fishing and picnicking.



RATES

Daily	\$100	plus tax (2 night minimum)
Weekly	\$500	plus tax
Monthly	\$1200	plus tax

Reservations are accepted by contacting April Billings at 276-655-4785 or Marty Rosser at 336-209-5444.